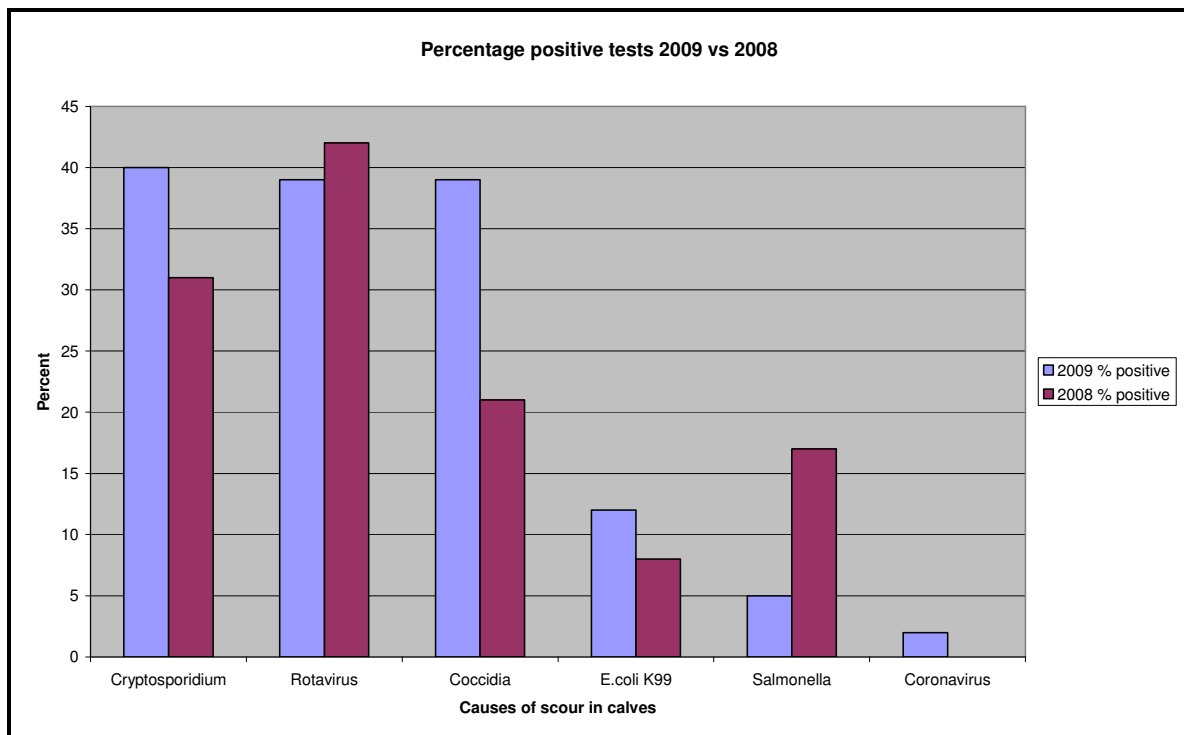




This season to date we have seen the usual suspects responsible for Calf scour. Cryptosporidium is coming out on top having just knocked Rotavirus off the podium. However, the calves with Cryptosporidium appear to have, on the whole, slightly milder infections when compared with the same period in 2008. The Cryptosporidium and Rotavirus similarities could be explained by the tendency for co-infections.

Probably the most concerning statistic displayed here is that the Coccidiosis incidence is so high in 2009. Targeting mainly older calves yet coming second equal with Rotavirus. Incidence has almost doubled in 2009 when compared to the 2008 season.

On the plus side Salmonella incidence is much lower this season when compared to the 2008 season – good news for the farmers.



	2009 % positive	2008 % positive
Cryptosporidium	40	31
Rotavirus	39	42
Coccidia	39	21
E.coli K99	12	8
Salmonella	5	17
Coronavirus	2	0

Table 1: Percentage positive tests performed. Note: Any one sample can have multiple infections.

Crypto score	2009 % positive	2008 % positive
+	23	18
++	9	7
+++	7	4
++++	1	2
None Seen / Negative	60	69

Table 2: Percentage Cryptosporidium Score.

Data is drawn from the NZVP Hamilton and NZVP Palmerston North database for the period 1st Jul to 4th Sept 2008 and 2009.

Yvette McFarlane